



5 Maudelaine Farm Apts, La Rue des Niemes, St Peter, Jersey, JE3 7FF
£489,000

Maudelaine Farm Apts, St Peter, JE3 7FF

Purpose-Built Apartment in a Green Lane Location

Situated within a small and exclusive development in the highly sought-after green lane area, this purpose-built property offers an excellent opportunity for comfortable modern living. Ideally located within walking distance of St Peter's Village, the home combines convenience with a peaceful setting.

The property benefits from two allocated parking spaces plus additional visitor parking. Internally, the accommodation includes a large and spacious open-plan lounge/diner, complemented by a well-equipped kitchen. There are two generous double bedrooms, an external storage cupboard, and access to a private garden. Positioned on the first floor, this attractive home is ideal for those seeking space, privacy, and a desirable location. Flying Freehold.

SERVICES

Economy 7 electric storage heaters. Mains water, mains drains. Service charge £200 pcm.

WHAT3WORDS

///dolly.companies.unequal

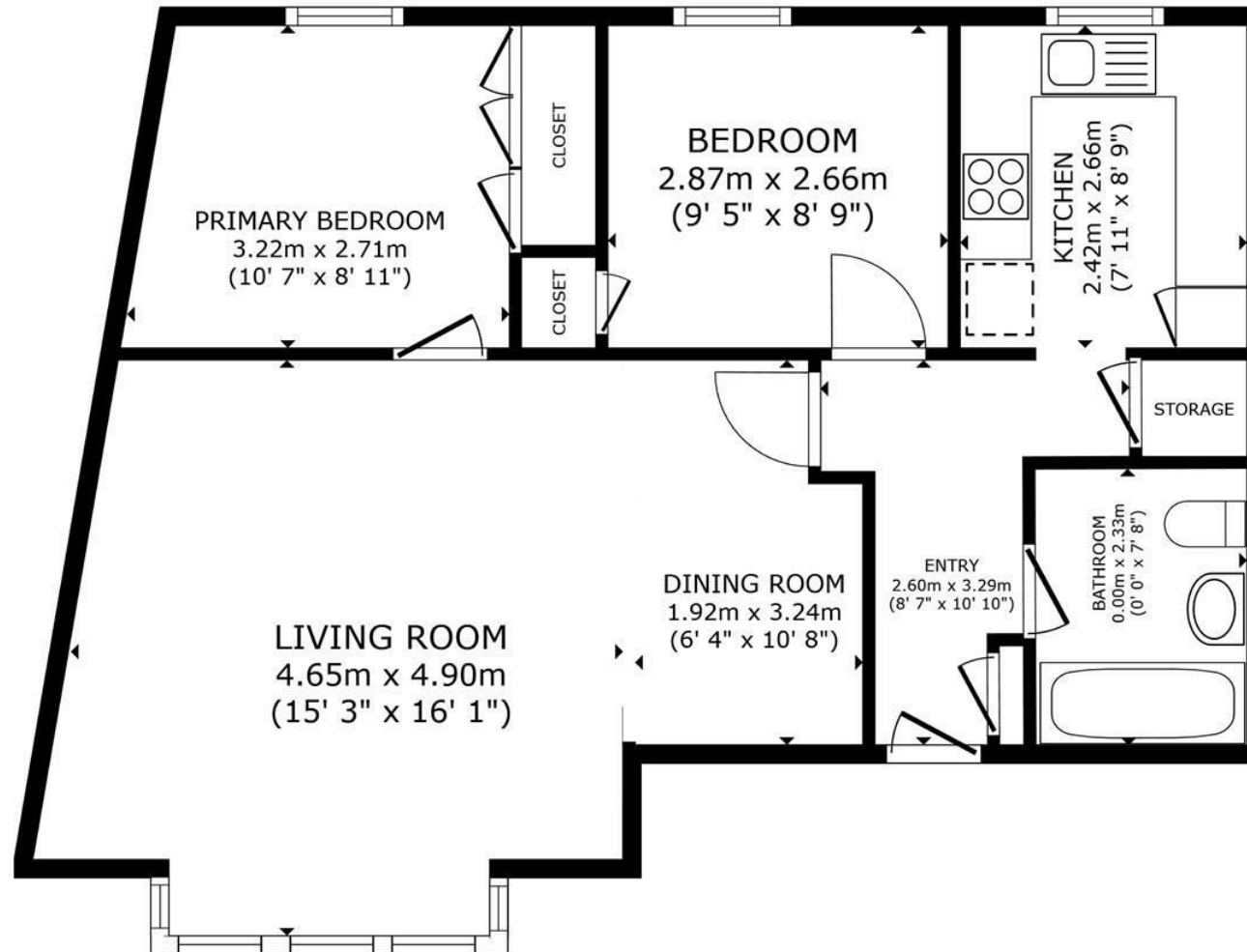
VIEWING

Please call Slomans, Sole Agents on 87 97 87. Please note that all areas and measurements given in these particulars are approximate and rounded. The text, photographs and floor plans are for general guidance only.

FREE VALUATION

Would you like to know what your own home is worth? If you would like a free verbal valuation please do not hesitate to contact us on 87 97 87





FLOOR PLAN

GROSS INTERNAL AREA
FLOOR PLAN 64.2 m² (692 sq.ft.)
TOTAL : 64.2 m² (692 sq.ft.)

SIZES AND DIMENSIONS ARE APPROXIMATE, ACTUAL MAY VARY.

